



PORTFOLIO

english version

studio arboré
Maximilian Jochim



STUDIO

Landstr. 19
37133 Groß Schneen

+49 163 6997005
mail@maximilianjochim.de

Instagram: studio arboré
www.maximilianjochim.de



*"The perfection of
a piece of furniture/object
is shown by the fact that
it touches people
and evokes emotions."*

FURNITURE DESIGN
DESIGN OBJECTS
CONCEPTION
UNIQUES



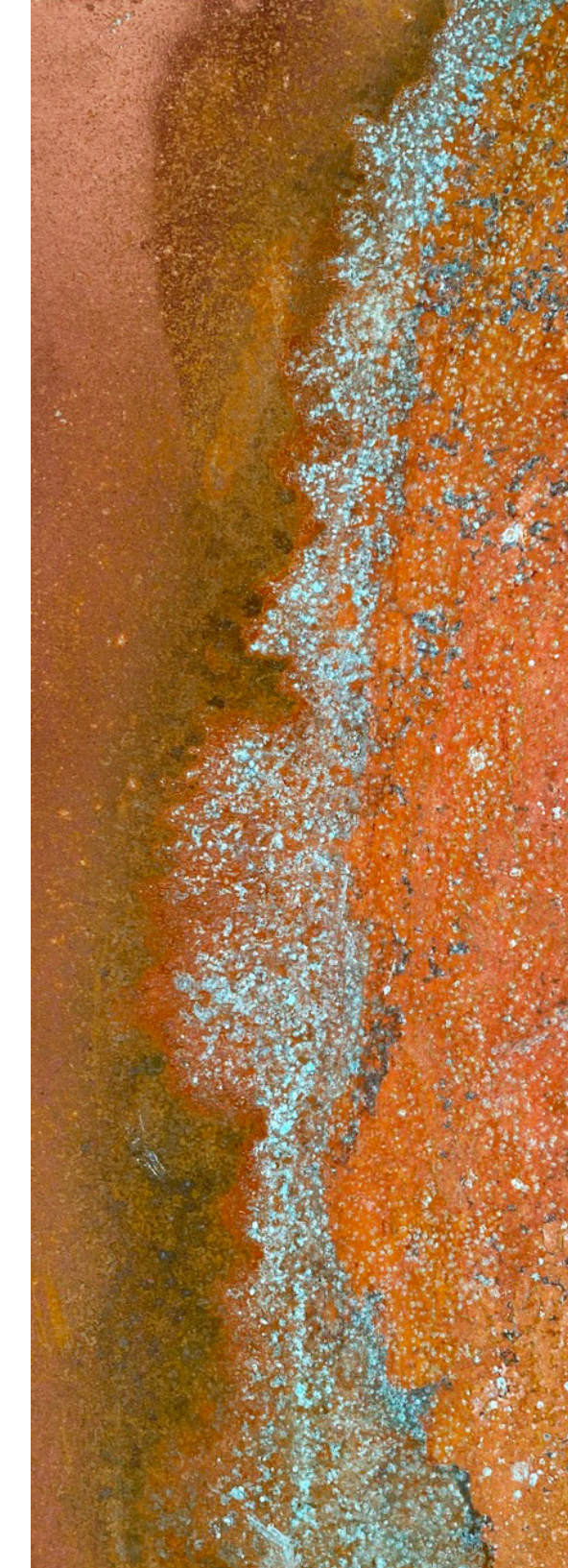


With the natural material wood,
I develop independent objects and concepts.

o expand the possibilities, I also vary my work
with materials such as paper, furniture linoleum,
ceramics, steel, copper, silver and other metals.

With time and love for well-thought-out design and details,
I try to create extraordinary things that
want to meet high ecological standards.

Applying these aspects, I am
happy to assist you as your personal designer.





A tree became a piece of furniture.



I always try to create objects where the path of the raw materials is kept as short as possible until they reach their habitat.

If you wish, I can create unique works for you with the help of a cross-disciplinary network of workshops, craftsmen, artisans and artists, which will accompany you throughout your life and fill you with joy.

**To create objects from living things,
we need respect, courage and an awareness of
the cycles of this world.**

When I look at a piece of furniture, I also see a plant,
the slowly formed mass of which was taken in hand
to create something “meaningful” and “aesthetic.”

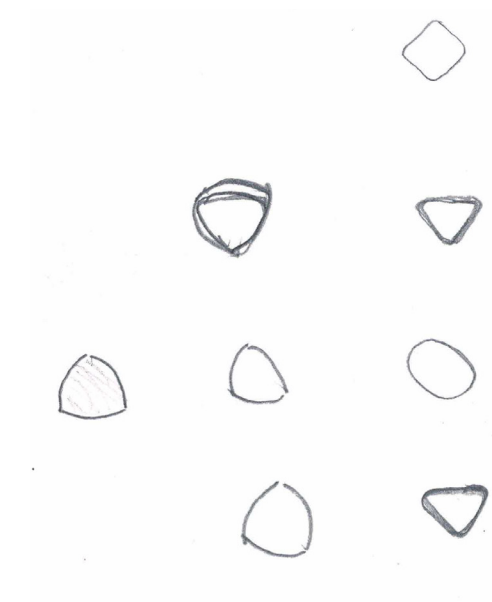
Preservation of usability and the possibility of
carbon storage through the replanting of the
regenerative raw material wood make the
use of trees for almost all areas of life makes sense.

But even as a renewable and supposedly versatile
resource, wood as a building material is finite
to a certain extent.

Efficient and appropriate use is therefore of the
utmost importance and creates home furnishings,
furniture, living space and warmth of particular value,
cosiness, health and sustainability.

All the points mentioned should not be forgotten
when considering things made of wood
and the processing of the material.





With the slightest of guidelines, each design can be created freely by me,
or developed in dialogue with you and your ideas.

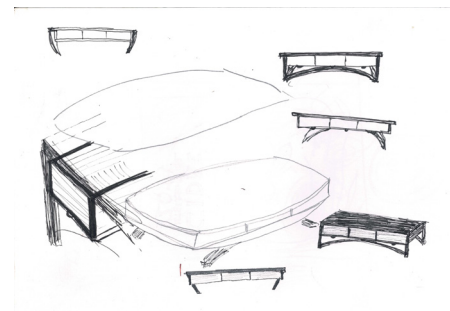


A small but elegant coffee table or magazine and book stand.





A very comfortable and elegant swivel stool. The dovetail joint in maple ensures that the cherrywood seat will not break apart. At the same time, it provides a simple contrast and incorporates traditional craftsmanship into this unique piece.



The coffee table in elm is easily movable thanks to its casters. Wine boxes collected by the customer over a long period of time have been immortalised in the furniture.

The drawers can be pulled out on either side of the table and are divided by a centre partition to prevent the contents from slipping out.





This is a desk that can be transformed into a drafting table by opening a hinged panel. On the right, an English train. A place where people regularly sit – full of verve, unleashing their changeable nature. A space that gives free rein to thoughts and images. An object that releases energy, leading to new forms.

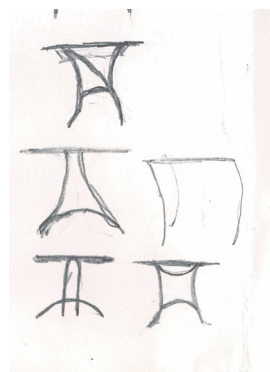


A small piece of furniture to store the most important things in the bedroom.
The slits on the sides allow light to enter or escape, making the bedside cabinet something special.

The small piece of furniture is unique and there is a desire for variation.

From the same amount of material, the same concept and
by changing just a few parameters, you can create very different designs
of this furniture. Generative design - handcrafted.
Every measurement has been carefully calculated using a mathematical formula.





This desk in elm includes a simple shelf in ash for storing a keyboard or other items. On the back, there is a cable duct made of wood to guide all cables in an orderly fashion along one side.

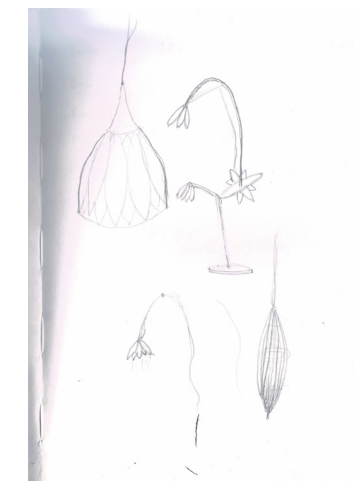




Small box. Functional object made of scrap wood, recycled fittings and leftover paint.



With fine objects made of local woods and other materials such as linen and slate, I also have little things for your living space in my repertoire. Do you have any special ideas, then please feel free to contact me. So we can in a joint process to create something very individual for you.





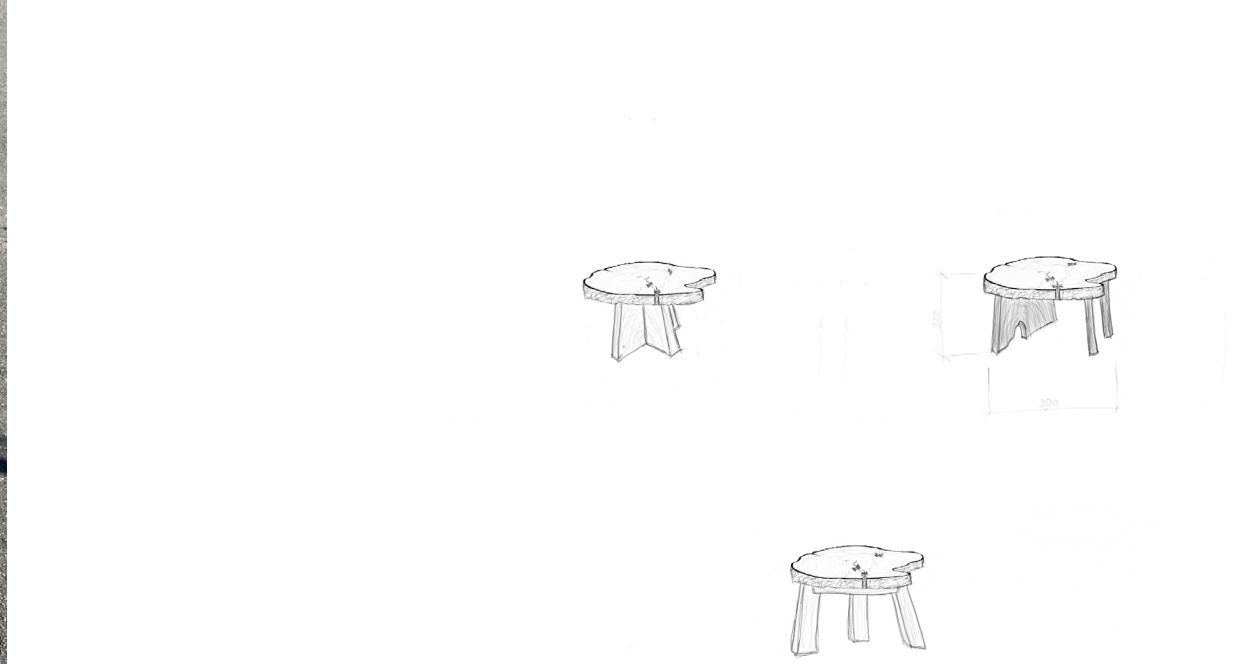
A bed in ash and oak, perfect for a futon, but also any other mattress can be placed in it.

Traditional wood joints such as the wedged web pins ensure a largely glue-free and completely metal-free bed.

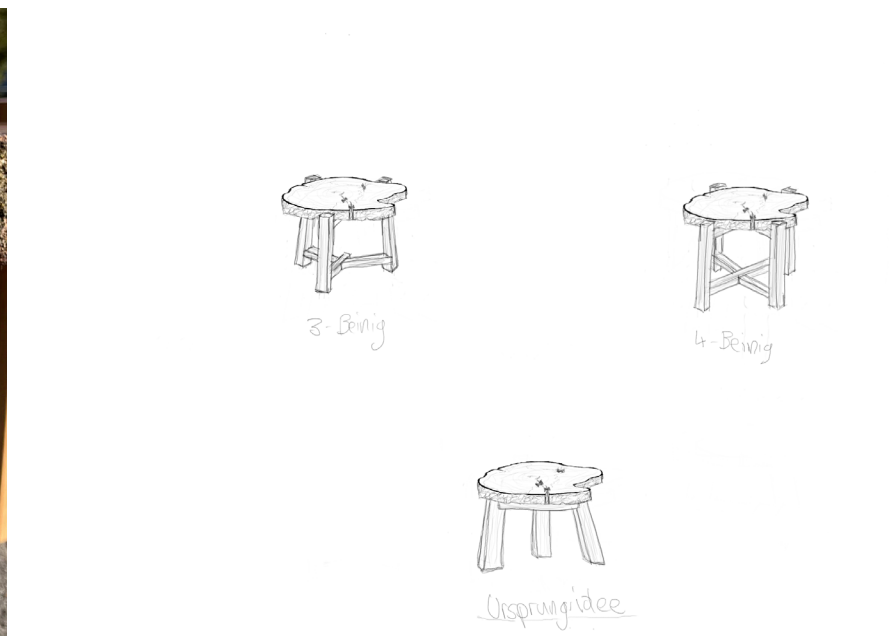
The furniture meets the requirement of being able to be taken apart by anyone into almost all individual parts. It is also very easy to reassemble.

The slatted frame consists of two easily assembled parts made of spruce wood. The slats are secured with wooden nails to prevent them from slipping. Felt gliders make every movement in this bed almost silent.





A small table made from the disc of a birch tree laden with childhood memories. The customer wanted to incorporate these memories into her living space. So this frame with traditional wood joints was created, which allows the tree disc to stand on its own.



A piece of furniture that can be adapted to suit your needs. Both a wardrobe and a chest, it can be customised to suit your personal needs and living conditions. A variety of handcrafted wood joints hold this special piece of furniture together.



The different sizes of drawers provide plenty of room for storing a wide range of items. The solid wood pull-out shelf can be used for all kinds of storage.



A goldsmith and a silversmith were involved in the work on the furniture. All the fittings are made of silver-plated brass. The wood for this piece of furniture was felled by me with my own hands. Almost all the work steps come from a single source.





VITA

1995 born in Lüneburg

2015–2018 apprenticeship as a joiner

since 2020 self-employed with a studio for wood design

from 2021 master school in Hildesheim

since 2023 part of the Kollektiv villare

2024 founding of studio arboré

with workshop in Groß Schneen near Göttingen, Germany

EXHIBITIONS

2013 the next generation, Bienenbüttel town hall, photographs (group exhibition)

2015 Kulturradeln, Bienenbüttel, photographs, poems & bicycle objects

2016 Kunst am Fluss, Jastorf, photographs and poems (group exhibition)

2018 Kunst Offen, Hof Randlage Haar, small furniture and graphics (group exhibition)

2019 HolzBewegt, Museum der Arbeit in Hamburg, journeyman's piece (group exhibition)

2023 historic Christmas market, Lübeck, unique pieces and small series

2024 Pop-Up Store Dießen am am Ammersee with Kollektiv villare

FREUND:INNEN

Kollektiv villare:

The group is an organisational unit. They live not in the same place, but create spaces for joint work, exhibitions and opportunities for exchange. They are united by inspiration from the outdoors and on the road. Their pieces tell stories through form, shape and material. Thus collected ashes become glazes for ceramics; wood found on a hike becomes spoons; the fallen cherry tree from the neighbour's garden becomes a fine piece of furniture and plant motifs can be found in carved reliefs, drawings and photographs.

Through their way of working, craftsmanship and art overlap. As a group, they work with these overlaps. villare connects people and landscapes, art and craftsmanship.

Philippa Jochim (Art educator & visual arts)
Romina Ried (Ceramics & visual arts)
Elisabeth Gumpp (Wood sculpture)
Johannes Prinz (Tree care & wood carving)

Tischlerei Beyland
Marei Reiß (Functional ceramics for daily use)

Instagram: studio arboré
www.maximilianjochim.de

+49 163 6997005
mail@maximilianjochim.de

Portfolio -
Download :



Every project is unique.

**Please feel free to contact me, whether you have specific plans or vague ideas.
Let's do it together and create something special for you.**

Appointments by arrangement.



